

A photograph of a forest scene with sunlight filtering through the trees, creating a hazy, ethereal atmosphere. The sunbeams are most prominent in the upper left and center. The trees are mostly evergreens, with some deciduous trees visible in the background. The overall tone is natural and serene.

STANLEY PARK
ECOLOGY SOCIETY

Annual Report

2021-2022



Stellar's jay, Don Enright; Cover: Sunburst through trees, Justine Kaseman

Contents

4	The Land	15	Working for Wildlife
5	Transformation	18	Community in Action
7	Highlights	21	Financials
10	Welcoming you Back	23	Our Supporters
12	Facing Challenges	27	Our Team



Rufous hummingbird, Frank Lin

The Land

We gratefully acknowledge that the land on which we work and help steward is the unceded and traditional territories of the xʷməθkwəy̓əm (Musqueam), Skwxwú7mesh (Squamish) Nation, and Səlilwətaʔ/Selilwitulh (Tsleil-Waututh) Nation. Since time immemorial, Coast Salish peoples have lived reciprocally with the land, harvesting and cultivating foods and medicines and practicing ceremony. The abundance of these lands and waters, which enables us to live, work, and play here today, is a result of the past and on-going stewardship and advocacy of the Coast Salish peoples.



Fungi on a log, Justine Kaseman



Western red cedar, Don Enright



Red-flowering currant, Justine Kaseman

A Year of Transformation

I feel very fortunate to be leading a passionate organization focused on preserving the ecological integrity of Stanley Park and beyond through ongoing conservation, stewardship, research, monitoring, and environmental education. The broader community benefits from habitat restoration that attracts, feeds, houses, and conserves 500+ species of wildlife in the Park to create an ideal experience and nature-scape for visitors and inhabitants alike.

2021 is a year that led to incredible transformations. 2021 began with notably unusual

and aggressive coyote behavior in the Park due to habituation and resulted in SPES spearheading a novel program in partnership with the Vancouver Park Board called Aversion Conditioning as well as placing trail cameras in the Park to monitor the coyote population and wildlife feeding. Since these projects began, there have been no reports of aggressive behavior amongst coyotes.

Our stewardship program continued with the support of a large number of dedicated volunteers, removing invasive flora from the Park, clearing almost 7.5 hectares and restoring

habitats through the planting of native trees, shrubs, and plants. We also began a free year-long webinar series based on the “State of the Park Report on the Ecological Integrity of Stanley Park” and co-hosted a free regional Stewardship Series with the Invasive Species Council of Metro Vancouver to share knowledge, skill, and experiences with fellow stewards. Surveys and data collection continue and will provide valuable data for the next iteration of the “State of the Park Report on Ecological Integrity”. Our Education team had another successful year offering both online and in-person

programming to support environmental literacy through public programming, school and teacher workshops and field trips, camps and clubs, as well as through our Nature House. Our work with Greater Vancouver Bird Celebration reached over 21,000 people online and through over 20 in-person events.

I am more grateful than ever for the incredible team of staff members who consistently provide exceptional programming and services, and who have demonstrated outstanding flexibility in adapting to the many challenges of the pandemic as well as the

many pivots resulting from park closures and extenuating circumstances. We would not have the impact that we do without our amazing roster of volunteers who have shown incredible dedication, continuing to give their time and energy to support our work, many of whom volunteer countless hours on a very consistent basis.

Our volunteer Board of Directors has done extraordinary work in providing governance and leadership to SPES, particularly this past year in revisiting the strategic plan, garnering input from stakeholders, and developing the new

strategic plan. We thank each and every staff member, volunteer, Board member, donor, member, funder, partner, and friend of SPES for their tireless efforts, now and always.

Tricia Collingham, Executive Director



Highlights



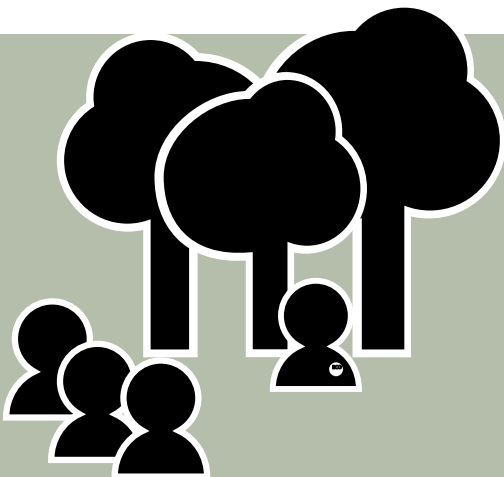
826 volunteers contributed to a total of 7,977 volunteer hours across the organization



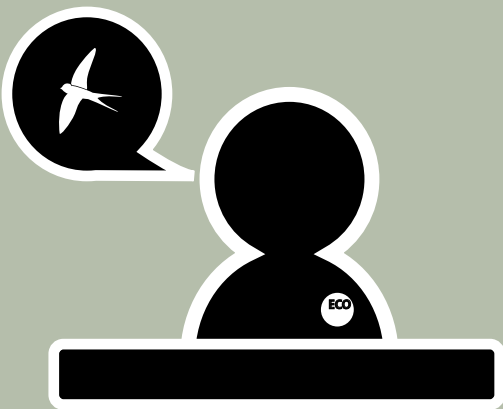
652 bats counted as the peak one-night total during 1 of 13 bat monitoring surveys



27 media interviews conducted with SPES Staff on topics such as invasive species removal, urban wildlife, and habitat restoration



88 educators built their skills at 1 of 4 professional development workshops focused on place-based learning



2,268 interactions with park visitors by EcoRanger volunteers sharing information on park ecosystems through July and August



2,686 children explored their curiosity for nature through SPES field trips and spring and summer EcoCamps



1,953 participants joined 101 online and in-person ecology-themed workshops, walks, and webinars



250 mason bee cocoons were released from the Lost Lagoon Air Bee N' Bee and the SPES Office



Children hugging a giant cedar, Justine Kaseman



Camper with a crab, Robyn Wadey



Volunteer removing English ivy, Kathleen Stormont

“The SPES program that we attended was so nicely planned out. It was an interactive and engaging workshop, and I cannot wait to visit again with my class next year!

P. Demosten, Henry Hudson

Welcoming you Back

Time in Transition

Navigating the changing landscape, from the varying demand for online and in-person programs, to increasing coyote conflict in the Park, our Education team adapted frequently to address emerging needs for day camps, field trips, and public programs.

EcoCamps

Campers built habitats for crabs and explored forest and wetland ecosystems through 10 weeks of uniquely-themed camps, culminating each week in a treasure hunt that tested their nature knowledge and skills. The intensifying coyote situation in July and August led to camps being rerouted to avoid conflict zones, staff receiving increased training to handle coyote encounters, and informed a greater focus on the importance of coexistence with urban wildlife throughout the programming.

Field Trips

Following months of online learning and a slower-than-usual fall season, the demand for spring field trips blew us away with teachers booking 84 trips for over 1,800 students between January and June. SPES Educators inspired students with intertidal exploration, the wonders of wildlife, and hands-on activities to engage the senses.

Public Programs

July 2021 saw the return of our in-person tours and workshops, and while online formats dominated at the start of the year, by the end the majority of our programs were being offered in-person. With our feet grounded back in Stanley Park, we were able to explore topics like therapeutic nature walks and bird songs all while taking in the scents of cedars and salmonberry.

To celebrate Earth Day, Talaysay Tours, Stanley Park Brewing and members of the public joined us for guided walks, invasive plant removal and games and crafts for the whole family.

Hello from Germany

We welcomed 9 international volunteers, for the first time since 2019, who contributed 963 hours supporting wildlife surveys, environmental education, and hands-on Park stewardship initiatives.



Facing Challenges

Coyotes: Where are we now?

In response to the escalating coyote crisis that resulted in a cull removing 11 coyotes in Stanley Park, we led a task force that included the City of Vancouver, Vancouver Park Board, BC Conservation Officer Service, the Ministry of Forests, Lands, Natural Resource Operations and Rural Development, and various experts and researchers across Canada to better understand local coyote populations and avoid future conflict. Our collaborative education and research efforts have contributed to greater wildlife management, upgrades to animal proof-garbage bins, and a better understanding of the coyotes in Stanley Park.

“The expertise and data SPES has diligently provided through the Co-existing with Coyotes program has been a key resource for the Vancouver Park Board’s ongoing promotion of coexistence in Stanley Park and other parks across the city.

Dana MacDonald, Vancouver Park Board

24

motion-activated trail cameras installed to collect coyote population data with support from UBC and the Vancouver Park Board

4-6

coyotes estimated to be living in the Park from a preliminary two-month study conducted by fourth year UBC students using trail camera footage

20

percent of garbage bins upgraded to be animal-proof in an effort to reduce indirect wildlife feeding

500

fine in dollars for the new wildlife feeding bylaw, approved by the Vancouver Park Board in September 2021 and enacted by City Council in April 2022

66

Aversion Conditioning patrols between May-July 2022, an innovative program developed to address habituation and maintain natural boundaries

0

aggressive coyote interactions recorded since September 2021



Digging up invasive species, Laura McGrath

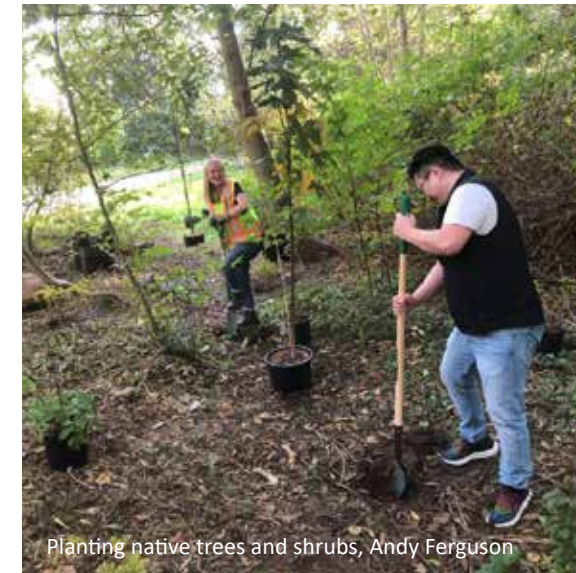
Discovering Wild Chervil

In May 2022, Wild Chervil (*Anthriscus sylvestris*), an invasive carrot, was found in large clusters on Avison trail in the north end of the Park. This species is on the Invasive Species Council of Metro Vancouver's priority list of invasive plants because of its ability to spread rapidly by seed and aggressive root systems. Similar to many other invasive plants, these characteristics mean that chervil often outcompetes and shades-out native herb and shrub species.

Our Dedicated Invasive Removal Team got to work meticulously removing the plants catching them before they went to seed. Within a few weeks, the clusters of chervil were removed. While the plant has not been fully eradicated in the Park, these efforts prevent further spread on

Avison trail and with repeated maintenance visits over the next few years, these patches might be eradicated before they become a much bigger problem.

Wild Chervil creates taproots that can extend up to 2 meters underground and must be fully removed to prevent the plant from reestablishing.



Planting native trees and shrubs, Andy Ferguson

Volunteers spent a total of **5,090 hours** working throughout the Park to remove invasive plants and plant native species, the equivalent of working 24 hours a day for 7 months straight.



Removing English ivy, Kathleen Stormont



Volunteers, Marisa Bischoff

With the help of dedicated volunteers, community members and local businesses, we have worked to restore **29 hectares** of Stanley Park, the equivalent of over 50 football fields.

Working for Wildlife



Barn swallow surveys counted 31 active nests with 115 chicks hatched, recovering after last year's count of 16 nests and 43 chicks.



Six rocky beaches were monitored on intertidal surveys. With the help of 20 volunteers, beach transects are surveyed for percent cover, the density of algae, and the presence of marine invertebrates like sea stars and mussels.



In the second year of exploratory and opportunistic bumblebee surveys, 60 individual bumblebees were observed over four sessions and 7 species were identified.



We supported 5 student group projects in programs from BCIT and UBC including a forest analysis on Western hemlocks affected by Looper moths and a wintering waterbird survey.



A total of 7 beavers were surveyed including 2 adults and 1 juvenile at Lost Lagoon and 2 adults 1 kit, and 1 juvenile at Beaver Lake. Kits are beavers born this season, while juveniles are typically 1-3 years old.



Stream invertebrate surveys were conducted on 4 different creeks in the Park. The diversity of invertebrates found and the types recorded can give an indication of the water quality found in each creek.



As part of the BC Marsh Monitoring Program, we collected data about birds, and amphibians, at Beaver Lake, Lost Lagoon hearing the calls of Pacific tree frogs and two target bird species: Virginia rail, and Sora.



Nearly 3,500 birds across 23 different species were counted during this season's Coastal Waterbird Survey run in partnership with Birds Canada. Species include Surf scoters and Pelagic cormorants.

“ I’ve found it incredibly rewarding volunteering with SPES monitoring surveys! I was new to the city as of last fall and being able to volunteer in an area I’m interested in has helped me feel more at home in this little community. It’s been very exciting so far - never have I seen almost 500 bats in my life!
Sophia Fan, Conservation Volunteer



Stream invertebrate survey, Marisa Bischoff

Community in Action



Candace Campo and Richard Till, Talaysay Tours



Sandpipers, Frank Lin



Trek participants with ivy, Jason Momeyer

Caring for Natural Spaces

Based on our 2020 State of the Park Report for the Ecological Integrity of Stanley Park (SOPEI), we launched a year-long webinar series called Caring for Natural Spaces in Urban Places. The series highlighted perspectives of scientists, urban planners and Indigenous knowledge holders who shared ideas and best practices about caring for various ecosystems and greenspaces in the urban context. Throughout the year, we had four different themes: Forest, Wetlands, Nearshore, and Climate, and we hosted 10 incredible presenters for a total of 253 attendees.

Celebrating Local Birds

Greater Vancouver Bird Celebration returned with a predominantly in-person programming offering in 2022. With 26 walks, webinars, workshops, and exhibits through 8 municipalities in our region, we were able to engage over 21,000 people coming together to connect with nature through bird photography walks led by Kerrisdale Cameras, a teaching of stories and significance of local bird relatives with Talaysay Tours, and a SPES-led story-sharing panel from bird experts and beginners alike.

TREKing in the Forest

Continuing our partnership with the TREK Outdoor Education Program, we hosted 4 invasive removal events in parts of the Brockton forest. In total, over 100 youth from the TREK program participated by removing English ivy from the forest while gaining some hands-on experience with ecosystem restoration in the process. Through their combined efforts, over 20 cubic meters of ivy was removed, including removing ivy from several trees. Some TREK participants even came back to volunteer and continue the work they started in different stewardship events.

Helping Hands

To celebrate the achievements of our volunteers, we marked National Volunteer Week in April by launching our new Volunteer Recognition Program. The tiered structure awards volunteers with a special gift every time a predetermined volunteering milestone is reached. We have also created a special Legacy Volunteer pin to recognize the unique and outstanding contributions of those volunteers who have contributed over 500+ hours.



Installing Wood duck nest boxes, Ariane Comeau

“ It is said that half the secret of a truly great Opera is hidden in plain sight: The Orchestra in the Orchestra Pit. Seldom seen and sparsely acknowledged, it creates magic night after night after night, enthralling audiences.

Having volunteered for around three years, I feel this principle applies equally to SPES. Stanley Park, our city’s much loved - and much used - green haven, would not be quite the gem it is today without the conservation, restoration and education endeavours of SPES and its team.... year after year after year, always behind the scenes.

Very proud indeed to call myself a SPES Volunteer!
Barry Khadalia, DIRT Volunteer

826
dedicated
volunteers

7,977
hours
contributed



Planting Oregon grape, Michael Schmidt

Gateway to the Park

Outreach volunteers, EcoRangers and Nature House Hosts, engaged 7,334 park visitors on the happenings of Stanley Park. Sharing information and providing helpful insights, these volunteers keep visitors up to date on important topics such as the developing coyote situation and the Pacific great blue heron colony.

“ I’ve learned about bats and watched them with delight just because I volunteered. I now care more about them and their welfare because I’ve learned a little bit more about who they are, their habits, and role in our world.
CS Ling, Volunteer



Nature House Educator, Shelby Soney; Erin Leckie

Financials

Statement of Activities

Revenue and Support

Donations and Membership Dues	\$59,507
Fundraising, Sales & Services	\$45,005
Grants and Wage Subsidies	\$341,628
Interest	\$2,485
Program Fees	\$364,223
Sponsorship	\$46,000

Total Revenue \$858,848

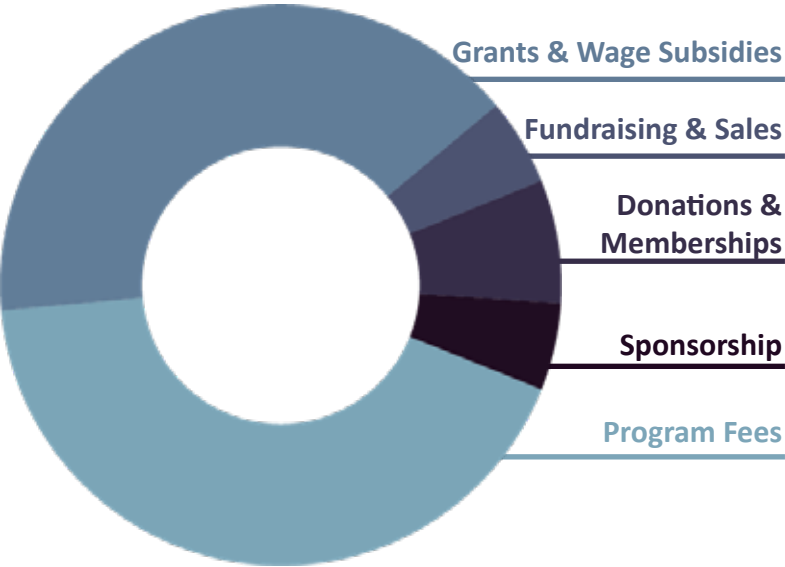
Expenses

Administrative supplies, services, support	\$26,371
Financial Services Charges	\$5,591
Professional fees	\$10,300
Program supplies & equipment	\$66,841
Wages and benefits	\$737,846

Total Expenses \$846,949



Income



Statement of Financial Position

Assets

Cash - Unrestricted	\$120,564
Cash - Restricted	\$125,000
Accounts Receivables	\$5,037
Grants Receivable	\$1,560
Prepaid Expenses	\$9,960
Property, Plant & Equipment	\$2,774
Sales Tax Recoverable	\$2,829
Total	\$267,724

Liabilities

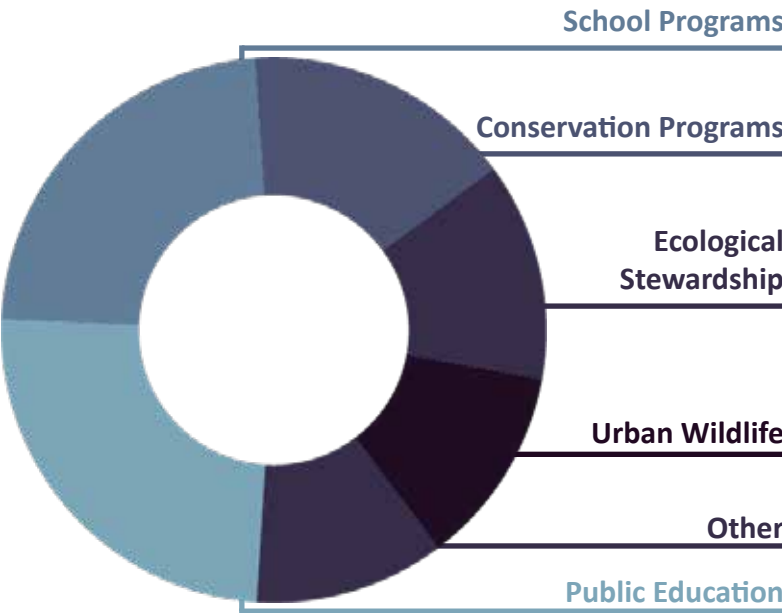
Accounts Payable & Accrued Liabilities	\$9,437
Wages Payable	\$27,360
Sales Taxes Payable	\$0
Deferred Income	\$63,822
Total	\$100,619

Net Assets

Internally Restricted	\$125,000
Unrestricted	\$39,331
Invested in Property, Plant and Equipment	\$2,774
Total	\$167,105

Total Liabilities and Net Assets \$267,724

Expenses by Class



Our Supporters

Visionaries

Organizations \$75,000+



Champions

Organizations \$30,000-\$74,999



Supporters

Organizations \$10,000-\$29,000



TD Friends of the Environment Foundation



Friends

Organizations \$1,000-\$9,999



Keith Lord Sports Foundation held at the Vancouver Foundation



Individuals \$5,000+

Rob Elner
Laurence Brown

Individuals \$1,000 - \$4,999

Adam Robb
Heikal Badrulhisham

Individuals \$500 - \$999

Anne Lockie
Anne Mauch
Bonnie Miller Wilson
Elisa Kreller
Gracen Chungath
Rob Butler
Sheena Mitchell
Gordon Howe
Jim Hall Jaz Munrowe

Judy Hoang
Tom McIlfaterick
Jenniferr Preece
Marilyn Mattenly

Individuals \$200-\$499

Brenda Southam
Dane Jansen
Erin Leckie
Heidi Creighton
Sandy Goldman
Mary Schwieger
Jill Johnstone
Jacqui McMullen
Jason Radgowski
Kevin Connery
Barbara Neil
Karen Lofgren
Neil Guernsey
Rita Douglas
Susan Howell-Jensen
Kathleen Stormont
Jo-Ann Stansfield
Zaylin Lalji
William Jeffries
Nora Kelly

Catherine Condon
Nancy Howatson
Brian Herrin
Martin Addison
Jorgen Harink
Ileana Mota
Julie Lustig
Leanne Dospital
Andrea Elvidge
Raimonde Demopoulos
Spencer Chandra
Herbert
Stanley Ulmer
Linda Rose
Lynne Olver
Joslin Kobylka
Martin Podolsky
Paula Pappajohn
Pamela Ades
Christopher Pavsek



Barn owl, Martin Passchier



Turkey tail fungus, Justine Kaseman

Individuals up to \$199

Susan Abs	Genevieve Cole	Barbara Fousek	Lynsey Jones	Jonina Male	Marisa Nichini	Joel Russell	Suzanne Thom
Sharon Adelman	Maureen Collier	Johannes G	Susan Jones	Ashley Mallon	Charles Nichols	Marley Rutledge	Lisa Thomas
Jan Alexander	Diann Condie-Smallman	Alison Gammage	Fernando Junqueira	Diarmuid Mangan	John Ogen	Erin Ryan	Kerry Thompson
Samantha Alsip	Sharon Cooper	Fernando Garces	Margaux Kaczor	Velibor Markovski	Lola Olczyk	Miranda Ryan	Katarina Thorsen
Brad Anderson	Lynn Copeland	Amelia Gillies	Anastasiya Karpenko	Fran Martin	Patricia Ong	Brull Sandra	Vincent Ting
Julie Andreyev	Chloe Corking	Maryke Gilmore	Maxwell Kates	Anne Mathisen	Zoe Pantelic	Laurie-Ann Sarachie	Helen Tremlett
Denzil John Asche	Barbara Coulter	Matthew Graham	Angela Kenyon	Diana Matrick	Lindsay Partin	Jesse Scharf	Erin Ubels
Diane Ash	Mark Crosby	Monique Green	Marilynn King	Irmgard Matthes	Lea Paulson	Kathie Schwaia	Stanley Ulmer
Tracey Axelsson	Fernanda Cruz	Kevin Griffin	Fawn Knight	Ann McCall	Donna Penney	Anny Scoones	Gina Ungaro
Pat Baird	Tara Culham	JoAnne Gulliver	Kim Koch	Ellie McCullough	Megan Pennington	Brenda Scragg	Hugh Wakeham
Victor Balon	Andre Dahl	Devon Haag	Patrick Korabek	Caitie McCullough	Danielle Piezas	Judy Sharp	Dr Rory Wallace
Karen Barron	Hallein Darby	Catherine Hanley	Rudy Kuettel	Connie McDonald	Lauren Pitout	Donna Sharpe	Diccon Ward
Arita Barton	Krista De Groot	Tessie Harris	Mary Landell	Carol Mcgrandles	Steve Podmore	Fraser Sharpe	John Whistler
Tara Belcourt	Carol DeFina	Lia Hart	Hannah Lane	Meaghan McKie	Katarina Pranke	Jennifer Sheldon	Shauna Wilton
Karen Benson	Nicole Delapierre	Courtney Healey	Violetta Lapinski	David McLellan	Gordon Price	Bev Sheridan	Loretta Woodcock
Brent Benton	Wendy Demosten	Barbara Henderson	Anjali Laul	Jacqui McMullen	Tomasz Przybyla	Doug Short	Julie Wright
Michelle Bjornson	Charlotte Dron	Elizabeth Hennessey Graves	Aria Laul	Laura Mercy	Carolyn Railton	Beverley Sinclair	Sharyn Yuen
Michael Bjornson	Lisa Dunn	Yasemin Hepguler	Robert Lauzon	Cate Metz	John Rattray	Emilia Slijepcevic	Diane & John
Rebecca Bollwitt	Jennifer Dusting	Thomas Hicks	Glen Leavitt	David Mirhady	Jeong Rattray	Mick Slivecko	West End Seniors Network
Claudia Bos	Margaret Egerer	Alison Higginson	Ruth Leckie	Dennis Moore	Sayak Ray	Eleanor Smith	
David Bradley	Christine Elliott	Judy Hoang	Peggy Lee	Sarah More	Dino Renna	Jill Southern	
Erin Brinkman	Margaret Elvidge	Jesse Holla	Marie-Claude Leonard	Catarina Moreno	Laura Richmond	Mike Stack	
Garth Brooks	Robert Elvidge	Karen Hurley	Toby Leonard	Tabi Morisette	Monaliza Riñon-Fiuza	Shannon Steele	
Tiffany Brunke	Julie Emerson	Ronald Imperial	Elizabeth Leroux	Sofi Morisette	Richard Riordan	Luke Stevenson Tuttle	
Paula Caird	Svetlana Ershov	Sonia Imperial	Suzanne Levy	Vickie Morris	Kate Rittenhouse	Philippa Stone	
Leigh Campbell	Robin Evans	John Ingram	Tavish Lew	Shelly Morrison	Gareth Roberts	Kathleen Stormont	
Lynda Challis	Zach Feldberg	Samuel Iverson	Sandra Lindahl	Wilhelmina Mosmans	Chris Robertson	Kate Sullivan	
Emma Chapman	Eckhardt S Ferdinandi	Karen James	Jen Lord	Ileana Mota	Lawrence Robertson	Mrs M Sytnick	
Melanie Chapple	Tatiana Ferrarin	Katelyn James	Ly Lovell	Eva Nagy	Ruben Rodriguez	Meladee Sytnick	
Kaylea Chard	Isabel Ferreras	Roy Jantzen	Brian Luong	Kazumi Nakamura	Rhona Rosen	Al Szajman	
Danielle Clarke	Josie Firmani	Saffina Jinnah	Judith MacPherson	Chikako Nakazawa	Josh Ruberg	Karen Takashi	
Heather Clarke	Stephen Follansbee	Arne Johansen	Frances Macrae	Zane Nanton	Emily Rugel	Tallulah Tallulah	
Kate Cockerill	Erica Foulkes	Tobias Jones	Helen Male	Sacha Narine	Robin Russell	Roxanne Taylor	



Tree planting, Erin Leckie



Earth Day, Erin Leckie



Outreach event, Ariane Comeau



Intertidal survey, Marisa Bischoff

Our Team

Board of Directors

Martin Addison
Rebecca Bollwitt
Rita Douglas
John Gray
Isabelle Groc
Indira Guha
Jorgen Harink
Genie Lam
Meaghan Lien
Haina Luo

Siobhan McDowell-
Powlowski
Tom McIlfaterick
Christopher Pavsek
Martin Podolsky
Jennifer J. Preece
Stefanie So

Judy Hoang, Advisor to
the Board



Staff and the Board of Directors

Staff

Marisa Bischoff
Anna Bondartchouk
Abbey Clancy
Tricia Collingham
Ariane Comeau
Alyx Coulter
Andy Ferguson
Fryda Granados
Rachel Green
Dacyn Holinda
Jeannine Johnstone
Justine Kaseman
Ray Lam

Olga Lansdrop
Erin Leckie
Tamara Likte
Megan Manes
Sarah More
Chandehl Morgan
Michael Murray
Dannie Piezas
Thuja Quickstad
Rana Sadjadi
Kathleen Stormont
Nadia Xenakis

This list includes all staff and board members between July
2021 and June 2022



Staff planting, Erin Leckie



Earth Day

STANLEY PARK
ECOLOGY SOCIETY

PO Box 5167
Vancouver BC
V6B 4B2
604-257-6908
info@stanleyparkecology.ca
www.stanleyparkecology.ca
Charity Number: 119166890 RR 0001



@StanleyParkEco



StanleyParkEcology



StanleyParkEcology