



## EASTERN GREY SQUIRREL

- Can be either grey or black
- Introduced to Stanley Park in 1914 but have since spread all over the Lower Mainland
- Well adapted to residential settings, very common in backyards



## DOUGLAS' SQUIRREL

- Squirrels' teeth grow and get worn down throughout their life
- Native to Stanley Park and B.C.
- Very vocal! Noises include chatter, barks, growls



## HARBOUR SEAL

- Can be seen swimming from anywhere along the Seawall
- Graceful and fast in water, awkward on land
- Often seen at close range by kayakers



## RIVER OTTER

- Seen at Lost Lagoon, Beaver Lake, and along beaches.
- Often seen sliding on ice, rolling in mud, and hunting for food.
- Unknown population size and den locations.



## SONGBIRDS



Black-capped Chickadee



Tree Swallow



Barn Swallow



Steller's Jay



Male and Female Red-winged Black Bird

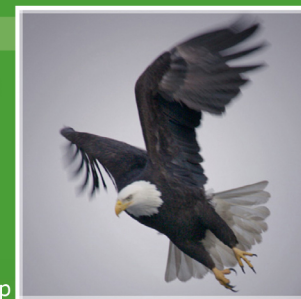


Male and Female Rufous Hummingbird



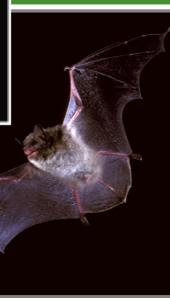
## BALD EAGLE

- Stanley Park has five Bald Eagles nests
- Eaglet feeding duties are shared by both parents
- Nest can be 2-3 meters in diameter and weigh 200 to 900 kilograms
- Adult feathering develop gradually; Eaglets develop the distinct white head and tail completely at their breeding age, which is 4-5 years old



## LITTLE BROWN BAT

- BC has sixteen bat species. Six of them live in Stanley Park
- Sleeps under loose bark and in crevices high in trees
- Mating occurs in late fall but fertilization doesn't occur until spring
- Young are independent one month after birth



## GREAT BLUE HERON

- Known as an easily disturbed nester, but not so in Stanley Park; heronry is adjacent to apartment building and Vancouver Park Board office parking lot
- Both parents incubate and raise young, but adults have new partners each year



## BEAVER

- Both Lost Lagoon and Beaver Lake each support a family of beavers.
- Primarily nocturnal and can be seen being active around 1 hour before or after dusk and dawn.
- Pairs mate for life and surviving offspring stay with their parents for around 2 years before leaving to find their own territories.

